

-20°C ÷ 80°C



Working pressure:
from 0,5 to 10 Bar



Compressed air



- Parallel gas BSPP ISO 228
from G1/8" to G1"
- Metric ISO 262
M5
- NPT
from N1/8" to N1/2"

Body: Nickel-plated brass
UNI EN 12165 CW617N



Membrane:
- NBR for M5 thread
- Polyurethane elastomer for all other sizes

Seal: Nylon

AVAILABILITY

Available on request with Viton membrane
from metric thread M5 to 1/2" BSPP thread

SILICONE FREE

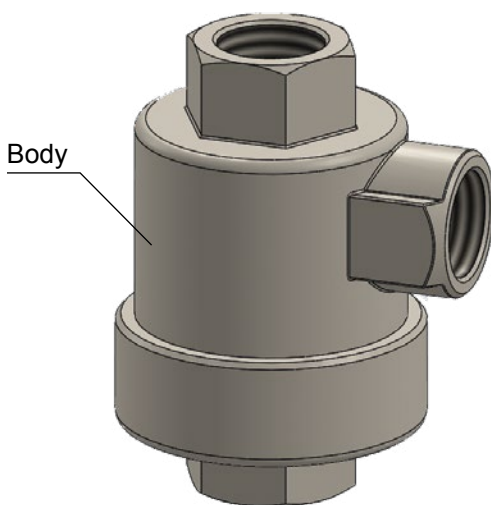


Products in compliance with
EC Regulation 1907/2006

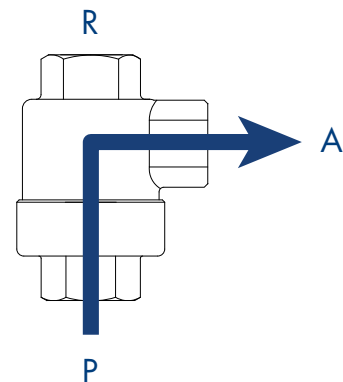
RoHS3

Products in compliance with
the directive EU 2015/863

CONSTRUCTION DETAILS



FLOW EXHAUST



This valve allows the air to be quickly expelled and consequently speeds up the working time.

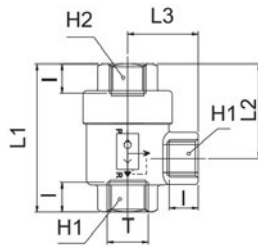
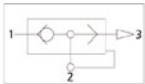
The air entering "P" displaces the membrane closing the outlet "R" and exits from outlet "A".

As soon as we remove the pressure coming from "P", the air at outlet "A" closes the outlet "P" due to the pressure difference, exiting quickly from exhaust outlet "R" where it is recommended to mount a silencer.



1100

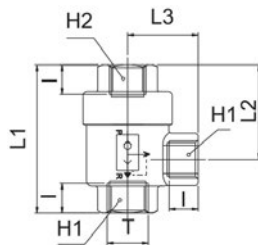
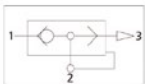
Quick exhaust valve, BSPP & metric thread



CODE	T	I	L1	L2	L3	H1	H2	g
1100TRM5	M5x0,8	4,5	24,8	15,6	10,5	10	10	27
1100TR18	G 1/8"	8,0	42,0	28,0	19,5	14	14	84
1100TR14	G 1/4"	11,0	53,0	34,5	25,0	19	19	146
1100TR38	G 3/8"	12,0	55,0	36,0	26,0	21	21	150
1100TR12	G 1/2"	14,0	71,0	44,0	35,0	26	26	314
1100TR34	G 3/4"	18,0	86,0	52,0	38,5	32	32	450
1100TR1	G 1"	19,0	94,0	56,0	42,0	38	38	525

1100-N

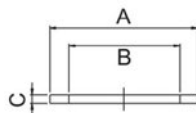
Quick exhaust valve, NPT thread



CODE	T	I	L1	L2	L3	H1	H2	g
1100TRN18	N 1/8"	8,0	42,0	28,0	19,5	14	14	84
1100TRN14	N 1/4"	11,0	53,0	34,5	25,0	19	19	146
1100TRN38	N 3/8"	12,0	55,0	36,0	26,0	21	21	150
1100TRN12	N 1/2"	14,0	71,0	44,0	35,0	26	26	314

1101

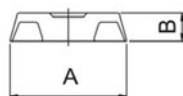
Nylon body seal



CODE	FOR VALVE	A	B	C	g
1101TRM5	M5x0,8	17,0	12,4	0,8	0,080
1101TR18	1/8"	23,8	20,0	1,0	0,014
1101TR14	1/4"	28,5	24,0	1,0	0,018
1101TR38	3/8"	28,5	24,0	1,0	0,018
1101TR12	1/2"	38,6	32,0	1,5	0,030
1101TR34	3/4"	45,0	38,0	1,5	0,760
1101TR1	1"	45,0	38,0	1,5	0,760

1102

Membrane for valve in polyurethane elastomer



CODE	FOR VALVE	A	B	g
* 1102TRM5	M5x0,8	13,5	4,5	0,4
1102TR18	1/8"	20,5	5,0	1,1
1102TR14	1/4"	25,5	5,8	1,9
1102TR38	3/8"	25,5	5,8	1,9
1102TR12	1/2"	35,5	8,2	2,5
1102TR34	3/4"	40,5	9,0	7,0
1102TR1	1"	40,5	9,0	7,0

* Membrane in NBR

